

BASIC RHYTHM PATTERNS

THESE RHYTHMS OFTEN OCCUR IN JAZZ BAND CHARTS.

STUDY AND PRACTICE THEM ON YOUR INSTRUMENT

UNTIL YOU CAN PLAY THEM WITH A GOOD

JAZZ FEELING

MED. UP ♩=160

Musical notation for the first rhythm pattern, marked "MED. UP ♩=160". It is written in bass clef with a 4/4 time signature. The pattern consists of a series of eighth and quarter notes, including a triplet of eighth notes and a final flourish.

MED. SLOW ♩=112

Musical notation for the second rhythm pattern, marked "MED. SLOW ♩=112". It is written in bass clef with a 4/4 time signature and a key signature of one flat. The pattern features a mix of quarter and eighth notes with accents.

SLOW ♩=108

Musical notation for the third rhythm pattern, marked "SLOW ♩=108". It is written in bass clef with a 4/4 time signature and a key signature of one flat. The pattern includes a long melodic line with a slur and a final flourish.

UP TEMPO ♩=168

Musical notation for the fourth rhythm pattern, marked "UP TEMPO ♩=168". It is written in bass clef with a 4/4 time signature and a key signature of one flat. The pattern features a fast melodic line with a slur and a triplet of eighth notes.

MED. SLOW ♩=108

Musical notation for the fifth rhythm pattern, marked "MED. SLOW ♩=108". It is written in bass clef with a 4/4 time signature and a key signature of one flat. The pattern consists of two lines of eighth and quarter notes with accents.

MED. SLOW ♩=112

Musical notation for MED. SLOW, tempo 112. Two staves of music in bass clef, 3/4 time signature. The first staff contains four measures of music with various note values and rests. The second staff contains four measures, including a triplet of eighth notes in the final measure.

MED. SWING ♩=138

Musical notation for MED. SWING, tempo 138. Two staves of music in bass clef, 3/4 time signature. The first staff contains four measures of music with various note values and rests. The second staff contains two measures of music, ending with a whole rest.

MED. UP ♩=108

Musical notation for MED. UP, tempo 108. One staff of music in bass clef, 3/4 time signature. The staff contains four measures of music with various note values and rests, including a long slur over the first two measures.

MED. BLUES ♩=112

Musical notation for MED. BLUES, tempo 112. Two staves of music in bass clef, 3/4 time signature. The first staff contains four measures of music with various note values and rests. The second staff contains four measures of music with various note values and rests.

MED. UP ♩=168

Musical score for the first piece, MED. UP ♩=168. It consists of three staves of music in bass clef with a key signature of two flats (B-flat and E-flat). The first staff begins with a double bar line and a repeat sign. The music features eighth and sixteenth notes with various articulations like accents and slurs.

MED. ♩=108

Musical score for the second piece, MED. ♩=108. It consists of three staves of music in bass clef with a key signature of two flats. The first staff starts with a common time signature (C). The music includes eighth and sixteenth notes with slurs and accents.

ROCK ♩=96

Musical score for the third piece, ROCK ♩=96. It consists of one staff of music in bass clef with a common time signature (C). The music is characterized by a driving eighth-note pattern with slurs and accents.

ROCK ♩=96

Musical score for the fourth piece, ROCK ♩=96. It consists of two staves of music in bass clef with a common time signature (C). The music features a complex eighth-note pattern with slurs and accents.

MED. ♩=132

MED. UP ♩=152

MED. SLOW GROOVE ♩=100

MED. ♩=138

MED. UP ♩=152

Two staves of musical notation in bass clef, 4/4 time, key of B-flat major. The first staff contains a melodic line with eighth and sixteenth notes, including accents and slurs. The second staff continues the melody with a triplet of eighth notes marked with a '3' below the notes.

MED. UP ♩=144

Two staves of musical notation in bass clef, 4/4 time, key of B-flat major. The first staff features a melodic line with eighth notes and rests. The second staff includes a first ending marked with a '1' and a second ending marked with a '2', both containing eighth notes and slurs.

MED. ♩=116

Two staves of musical notation in bass clef, 4/4 time, key of B-flat major. The first staff shows a melodic line with eighth notes and slurs. The second staff continues the melody with eighth notes and slurs.

MED. ♩=132

Two staves of musical notation in bass clef, 4/4 time, key of B-flat major. The first staff contains a melodic line with eighth notes and slurs. The second staff continues the melody with eighth notes and slurs.

AUCTION EXCERPTS FOR B.S.U.

JAZZ BANDS

TROMBONE

A MED. ♩=126

Section A, measures 1-4. The music is in bass clef with a 4/4 time signature. It features a melodic line with various intervals, including a tritone (F# and C), and includes a triplet of eighth notes in measure 3.

Section B, measures 1-2. The music continues in bass clef with a 4/4 time signature, featuring a triplet of eighth notes in measure 1.

Section B, measures 3-4. The music continues in bass clef with a 4/4 time signature, featuring a triplet of eighth notes in measure 3.

Section B, measures 5-6. The music continues in bass clef with a 4/4 time signature, featuring a triplet of eighth notes in measure 5.

Section B, measures 7-8. The music continues in bass clef with a 4/4 time signature, featuring a triplet of eighth notes in measure 7.

Section B, measures 9-10. The music continues in bass clef with a 4/4 time signature, featuring a triplet of eighth notes in measure 10.

BALLAD $\text{♩} = 72$ OPT. 8VA

(A) SLOWLY $\text{♩} = 72$

8 LAZY $\text{♩} = 92$

Musical score for 'LAZY' in bass clef, key of D major (two sharps), 4/4 time, tempo $\text{♩} = 92$. The score consists of five staves of music. The first staff begins with a treble clef and a key signature of two sharps. The melody is characterized by a slow, relaxed feel with long notes and a few slurs. The second staff continues the melody with a similar relaxed feel. The third staff introduces some rhythmic variation with eighth notes and slurs. The fourth staff features a change in dynamics with a mf marking and includes some chromatic movement. The fifth staff concludes the piece with a final note and a double bar line.

SWING BLUES $\text{♩} = 176$

Musical score for 'SWING BLUES' in bass clef, key of Bb major (two flats), 4/4 time, tempo $\text{♩} = 176$. The score consists of four staves of music. The first staff begins with a treble clef and a key signature of two flats. The melody is characterized by a fast, swinging feel with eighth notes and slurs. The second staff continues the melody with a similar swinging feel. The third staff features a change in dynamics with a f marking and includes some chromatic movement. The fourth staff concludes the piece with a final note and a double bar line.

SAMBA ROCK $\text{♩} = 96$

First staff of music for Samba Rock, featuring a bass clef, key signature of two flats, and a 4/4 time signature. The melody consists of eighth and sixteenth notes with various accents and slurs.

LIGHT ROCK FEEL $\text{♩} = 144$

Second staff of music for Light Rock Feel, featuring a bass clef, key signature of two flats, and a 3/4 time signature. The melody includes quarter and eighth notes with accents.

Third staff of music for Light Rock Feel, featuring a bass clef, key signature of two flats, and a 3/4 time signature. The melody includes quarter and eighth notes with dynamic markings such as mf , fz , and sfz .

Fourth staff of music for Light Rock Feel, featuring a bass clef, key signature of two flats, and a 3/4 time signature. The melody includes quarter and eighth notes with dynamic markings such as fz and mf .

Fifth staff of music for Light Rock Feel, featuring a bass clef, key signature of two flats, and a 3/4 time signature. The melody includes quarter and eighth notes with dynamic markings such as fz .

Sixth staff of music for Light Rock Feel, featuring a bass clef, key signature of two flats, and a 3/4 time signature. The melody includes quarter and eighth notes with dynamic markings such as fz .

Seventh staff of music for Light Rock Feel, featuring a bass clef, key signature of two flats, and a 3/4 time signature. The melody includes quarter and eighth notes with dynamic markings such as fz .

MED. SWING $\text{♩} = 138$

Eighth staff of music for Med. Swing, featuring a bass clef, key signature of two flats, and a 3/4 time signature. The melody includes quarter and eighth notes with triplets and dynamic markings such as (4) .

Ninth staff of music for Med. Swing, featuring a bass clef, key signature of two flats, and a 3/4 time signature. The melody includes quarter and eighth notes with triplets and dynamic markings such as (4) .

MELO. ♩=144

Musical notation for the MELO. section, tempo 144. It consists of three staves of music in bass clef, 3/4 time, with a key signature of two flats. The first staff contains the first four measures, the second staff the next four measures, and the third staff the final four measures, ending with a double bar line.

BALLAD ♩=72

Musical notation for the BALLAD section, tempo 72. It consists of two staves of music in bass clef, 3/4 time, with a key signature of two flats. The first staff contains the first four measures, and the second staff the next four measures, ending with a double bar line.

(A) SAMBA - FAST ♩=104

Musical notation for the SAMBA - FAST section, tempo 104. It consists of four staves of music in bass clef, 3/4 time, with a key signature of two flats. The first staff contains the first four measures, the second staff the next four measures, the third staff the next four measures, and the fourth staff the final four measures, ending with a double bar line.

A MED. ♩=144

Musical notation for section A, measures 1-4. The notation is in bass clef with a common time signature. It features a melodic line with various notes, including eighth and sixteenth notes, and rests. There are dynamic markings such as accents (^) and slurs. The key signature has one flat (Bb).

B

Musical notation for section B, measures 1-2. The notation is in bass clef with a common time signature. It features a melodic line with various notes, including eighth and sixteenth notes, and rests. There are dynamic markings such as accents (^) and slurs. The key signature has one flat (Bb).

ROCK ♩=96

Musical notation for section C, measures 1-2. The notation is in bass clef with a common time signature. It features a melodic line with various notes, including eighth and sixteenth notes, and rests. There are dynamic markings such as accents (^) and slurs. The key signature has two flats (Bb, Eb). There are also some markings like (b) and a double bar line with a repeat sign.

LATIN TWO ♩=100

Musical score for 'LATIN TWO' in bass clef, 4/4 time, tempo 100. The score consists of five staves of music. The first staff begins with a treble clef and a common time signature, then changes to bass clef and 4/4. It features a melodic line with a repeat sign and a fermata. The second staff continues the melody with various rhythmic values and accidentals. The third staff shows a more rhythmic pattern with accents. The fourth staff has a first ending bracket. The fifth staff concludes with a repeat sign and a fermata.

MED. UP ♩=168

Musical score for 'MED. UP' in bass clef, 4/4 time, tempo 168. The score consists of four staves of music. The first staff begins with a treble clef and a common time signature, then changes to bass clef and 4/4. It features a melodic line with a repeat sign and a fermata. The second staff continues the melody with various rhythmic values and accidentals. The third staff shows a more rhythmic pattern with accents. The fourth staff concludes with a repeat sign and a fermata.

MED. SWING $\text{♩} = 100$

Musical notation for the Med. Swing section, bass clef, 4/4 time signature. The notation consists of three staves of music. The first staff begins with a treble clef and a key signature of one flat (B-flat). The music features eighth and sixteenth notes with various articulations such as accents and slurs. The second staff continues the melodic line with similar rhythmic patterns. The third staff concludes the section with a double bar line.

BALLAD $\text{♩} = 66$

Musical notation for the Ballad section, bass clef, 4/4 time signature. The notation consists of two staves of music. The first staff begins with a treble clef and a key signature of two sharps (D major). The music is characterized by a slower tempo and features long, flowing lines with many slurs and ties. The second staff continues the melodic line, ending with a double bar line.

ROCK $\text{♩} = 88$

Musical notation for the Rock section, bass clef, 4/4 time signature. The notation consists of three staves of music. The first staff begins with a treble clef and a key signature of one flat (B-flat). The music is characterized by a faster tempo and features a driving, rhythmic pattern with many slurs and ties. A dynamic marking of mf is present under the first staff. The second and third staves continue the rhythmic pattern, ending with a double bar line.

BALLAD ♩=80

Two staves of musical notation in bass clef, key of D major (one sharp). The first staff begins with a dynamic marking of *mf*. The music consists of a series of eighth and quarter notes, some with slurs and accents, ending with a double bar line.

(A) ROCK ♩=108

Two staves of musical notation in bass clef, key of D minor (two flats). The music is characterized by a driving eighth-note pattern with accents and slurs, typical of a rock ballad. It concludes with a double bar line.

(B)

Two staves of musical notation in bass clef, key of D minor. This section features a more complex eighth-note pattern with various accidentals and slurs, maintaining the rock ballad feel. It ends with a double bar line.

(C) ♩=208

Two staves of musical notation in bass clef, key of D minor. The tempo is marked as ♩=208. The music is very fast, consisting of a dense eighth-note pattern. It concludes with a double bar line and a fermata over the final note.

MED. ♩=144

The first piece is a four-staff musical score in bass clef, 3/4 time, with a tempo of MED. ♩=144. The key signature has one sharp (F#). The music features a melodic line with various ornaments, including accents, slurs, and a triplet in the first staff. The piece concludes with a double bar line.

MED. SWING ♩=144

The second piece is a four-staff musical score in bass clef, 3/4 time, with a tempo of MED. SWING ♩=144. The key signature has three flats (Bb, Eb, Ab). The music features a melodic line with various ornaments, including accents, slurs, and a triplet in the first staff. The piece concludes with a double bar line.

MOD. TWO FEEL ♩=80

(5) (5) (5) (4)

MED. SWING ♩=168

BALLAD ♩=84

① MED. SWING ♩=176

②

mf

ROCK ♩=96

MED. SWING $\text{♩} = 152$

Musical score for Med. Swing, tempo $\text{♩} = 152$. The score consists of six staves of music in bass clef, 2/4 time, with a key signature of one flat (Bb). The music features eighth and sixteenth notes, rests, and various accidentals. A circled '4' and '5' are written below the third staff.

MED. SWING $\text{♩} = 100$

Musical score for Med. Swing, tempo $\text{♩} = 100$. The score consists of three staves of music in bass clef, 2/4 time, with a key signature of three flats (Bbb). The music features half notes, quarter notes, and eighth notes.

MED. UP ♩=168

MED. UP ♩=168

ROCK ♩=176

ROCK ♩=176

SWING ♩=160

First system: Bass clef, key signature of one flat (Bb), 3/4 time signature. Measures 1-4. Measure 1: quarter note Bb, quarter note Gb, quarter note Ab. Measure 2: quarter note Ab, quarter note Gb, quarter note Ab, quarter note Bb. Measure 3: quarter note Bb, quarter note Ab, quarter note Gb, quarter note Ab. Measure 4: quarter note Bb, quarter note Ab, quarter note Gb, quarter note Ab.

Second system: Measures 5-8. Measure 5: quarter note Bb, quarter note Ab, quarter note Gb, quarter note Ab. Measure 6: quarter note Bb, quarter note Ab, quarter note Gb, quarter note Ab. Measure 7: quarter note Bb, quarter note Ab, quarter note Gb, quarter note Ab. Measure 8: quarter note Bb, quarter note Ab, quarter note Gb, quarter note Ab.

Third system: Measures 9-12. Measure 9: quarter note Bb, quarter note Ab, quarter note Gb, quarter note Ab. Measure 10: quarter note Bb, quarter note Ab, quarter note Gb, quarter note Ab. Measure 11: quarter note Bb, quarter note Ab, quarter note Gb, quarter note Ab. Measure 12: quarter note Bb, quarter note Ab, quarter note Gb, quarter note Ab.

Fourth system: Measures 13-16. Measure 13: quarter note Bb, quarter note Ab, quarter note Gb, quarter note Ab. Measure 14: quarter note Bb, quarter note Ab, quarter note Gb, quarter note Ab. Measure 15: quarter note Bb, quarter note Ab, quarter note Gb, quarter note Ab. Measure 16: quarter note Bb, quarter note Ab, quarter note Gb, quarter note Ab.

SWING ♩=160

Fifth system: Bass clef, key signature of one flat (Bb), 3/4 time signature. Measures 17-20. Measure 17: quarter note Bb, quarter note Ab, quarter note Gb, quarter note Ab. Measure 18: quarter note Bb, quarter note Ab, quarter note Gb, quarter note Ab. Measure 19: quarter note Bb, quarter note Ab, quarter note Gb, quarter note Ab. Measure 20: quarter note Bb, quarter note Ab, quarter note Gb, quarter note Ab.

Sixth system: Measures 21-24. Measure 21: quarter note Bb, quarter note Ab, quarter note Gb, quarter note Ab. Measure 22: quarter note Bb, quarter note Ab, quarter note Gb, quarter note Ab. Measure 23: quarter note Bb, quarter note Ab, quarter note Gb, quarter note Ab. Measure 24: quarter note Bb, quarter note Ab, quarter note Gb, quarter note Ab.

UP TEMPO ♩=184

Seventh system: Bass clef, key signature of two sharps (D major), common time signature. Measures 25-28. Measure 25: quarter note D, quarter note E, quarter note F#, quarter note G. Measure 26: quarter note G, quarter note A, quarter note B, quarter note C. Measure 27: quarter note C, quarter note B, quarter note A, quarter note G. Measure 28: quarter note G, quarter note F#, quarter note E, quarter note D.

Eighth system: Measures 29-32. Measure 29: quarter note D, quarter note E, quarter note F#, quarter note G. Measure 30: quarter note G, quarter note A, quarter note B, quarter note C. Measure 31: quarter note C, quarter note B, quarter note A, quarter note G. Measure 32: quarter note G, quarter note F#, quarter note E, quarter note D.

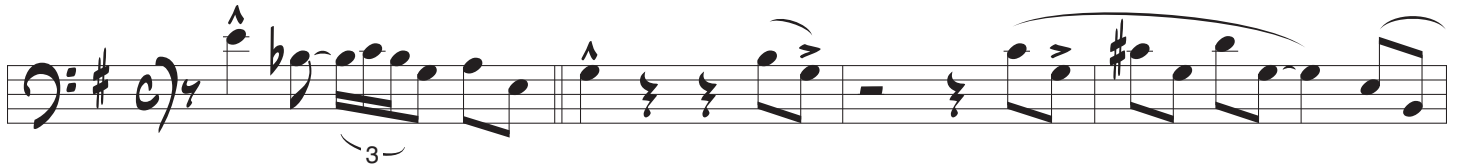
Ninth system: Measures 33-36. Measure 33: quarter note D, quarter note E, quarter note F#, quarter note G. Measure 34: quarter note G, quarter note A, quarter note B, quarter note C. Measure 35: quarter note C, quarter note B, quarter note A, quarter note G. Measure 36: quarter note G, quarter note F#, quarter note E, quarter note D.



MED. ♩ = 168



MED. ♩ = 132



8 UP TEMPO $\text{♩} = 108$

Musical notation for the first section, featuring a bass clef, key signature of two flats, and a 4/4 time signature. It consists of three staves of music with various note values and articulations.

ROCK $\text{♩} = 92$

Musical notation for the second section, featuring a bass clef, key signature of two flats, and a 3/4 time signature. It consists of two staves of music with various note values and articulations.

$\text{♩} = \text{♩}$

Musical notation for the third section, featuring a bass clef, key signature of two flats, and a 2/4 time signature. It consists of two staves of music with various note values and articulations.

MED. SWING $\text{♩} = 88$

Four staves of musical notation for a Med. Swing piece. The key signature is two flats (B-flat and E-flat), and the time signature is common time (C). The notation includes eighth and sixteenth notes, often beamed together, with various articulations such as accents and slurs. The first staff begins with a double bar line and a repeat sign. The second staff has a quarter rest followed by eighth notes. The third staff has a quarter rest followed by quarter notes. The fourth staff ends with a double bar line.

SAMBA $\text{♩} = 96$

Five staves of musical notation for a Samba piece. The key signature is one sharp (F-sharp), and the time signature is common time (C). The notation features eighth and sixteenth notes, often beamed together, with accents and slurs. The first staff has a quarter rest followed by eighth notes. The second staff has a quarter rest followed by eighth notes. The third staff has a quarter rest followed by eighth notes. The fourth staff has a quarter rest followed by eighth notes. The fifth staff has a quarter rest followed by eighth notes.

First musical staff in bass clef, key signature of one sharp (F#), and common time. It begins with a half note F#2, followed by eighth notes G2, A2, B2, C3, and D3. A slur covers the next four notes: E3, F#3, G3, and A3. The staff concludes with a whole note B3.

Second musical staff in bass clef, key signature of one sharp (F#), and common time. It starts with a half note F#2, followed by eighth notes G2, A2, B2, and C3. A slur covers the next four notes: D3, E3, F#3, and G3. The staff ends with a whole note A3.

MED. ♩=172

Third musical staff in bass clef, key signature of one flat (Bb), and common time. It begins with a half note Bb1, followed by eighth notes C2, D2, E2, and F2. A slur covers the next four notes: G2, Ab2, Bb2, and C3. The staff concludes with a whole note D3.

Fourth musical staff in bass clef, key signature of one flat (Bb), and common time. It starts with a half note Bb1, followed by eighth notes C2, D2, E2, and F2. A slur covers the next four notes: G2, Ab2, Bb2, and C3. The staff ends with a whole note D3.

Fifth musical staff in bass clef, key signature of one flat (Bb), and common time. It begins with a half note Bb1, followed by eighth notes C2, D2, E2, and F2. A slur covers the next four notes: G2, Ab2, Bb2, and C3. The staff concludes with a whole note D3.

Sixth musical staff in bass clef, key signature of one flat (Bb), and common time. It starts with a half note Bb1, followed by eighth notes C2, D2, E2, and F2. A slur covers the next four notes: G2, Ab2, Bb2, and C3. The staff ends with a whole note D3.

Seventh musical staff in bass clef, key signature of one flat (Bb), and common time. It begins with a half note Bb1, followed by eighth notes C2, D2, E2, and F2. A slur covers the next four notes: G2, Ab2, Bb2, and C3. The staff concludes with a whole note D3.

Eighth musical staff in bass clef, key signature of one flat (Bb), and common time. It starts with a half note Bb1, followed by eighth notes C2, D2, E2, and F2. A slur covers the next four notes: G2, Ab2, Bb2, and C3. The staff ends with a whole note D3.

Ninth musical staff in bass clef, key signature of one flat (Bb), and common time. It begins with a half note Bb1, followed by eighth notes C2, D2, E2, and F2. A slur covers the next four notes: G2, Ab2, Bb2, and C3. The staff concludes with a whole note D3.

LATIN ROCK ♩=88

Four staves of musical notation in bass clef, 4/4 time signature. The music consists of eighth and sixteenth notes, many with accents. There are several slurs over groups of notes. The key signature is one flat (B-flat).

MED. SWING ♩=160

Four staves of musical notation in bass clef, 4/4 time signature. The music consists of eighth and sixteenth notes, many with slurs and accents. The key signature is one flat (B-flat).

SWING $\text{♩} = 160$

The image displays ten staves of musical notation for a swing piece. The key signature is three flats (B-flat major/C minor), and the time signature is 4/4. The tempo is marked as quarter note = 160. The notation includes various rhythmic patterns, slurs, and accents. The first staff begins with a treble clef and a common time signature, which then changes to 4/4. The music is written in bass clef for the remainder of the page. The notation features a variety of note values, including eighth and sixteenth notes, and rests. Slurs and accents are used throughout to indicate phrasing and emphasis. The piece concludes with a double bar line at the end of the tenth staff.

BASS TROMBONE

(A) MED. SWING $\text{♩} = 160$

Musical notation for section A, Med. Swing, measures 1-12. The notation is in bass clef with a common time signature. It features a series of eighth and quarter notes with various accidentals (sharps, flats, naturals) and accents. The melody is written on a single staff.

(B)

Musical notation for section B, measures 13-24. The notation is in bass clef with a common time signature. It features a series of eighth and quarter notes with various accidentals and accents. The melody is written on a single staff.

ROCK

Musical notation for section Rock, measures 25-36. The notation is in bass clef with a common time signature. It features a series of eighth and quarter notes with various accidentals and accents. The melody is written on a single staff.

BALLAD $\text{♩} = 80$

Musical notation for section Ballad, measures 37-48. The notation is in bass clef with a common time signature. It features a series of eighth and quarter notes with various accidentals and accents. The melody is written on a single staff. Dynamic markings include *mf* and *f*. A triplet of eighth notes is marked with a '3' and an accent.

MED. SWING ♩=126

Musical notation for Med. Swing, tempo 126. Two staves of music in bass clef, key of D major, 4/4 time. The first staff contains two measures of music with eighth and quarter notes, some with accents. The second staff continues the melody with eighth and quarter notes, ending with a double bar line.

MED. SHUFFLE ♩=112

Musical notation for Med. Shuffle, tempo 112. Four staves of music in bass clef, key of D major, 4/4 time. The first staff has a long note followed by a rest and then a few notes. The subsequent staves feature a rhythmic pattern of eighth and quarter notes with various accidentals and accents.

MED. SWING ♩=144

Musical notation for Med. Swing, tempo 144. Two staves of music in bass clef, key of D major, 4/4 time. The first staff contains two measures of music with eighth and quarter notes, some with accents. The second staff continues the melody with eighth and quarter notes, ending with a double bar line.

BALLAD $\text{♩} = 72$

mf

1 2

VERY FAST $\text{♩} = 100$

MED. GROOVE $\text{♩} = 96$

ROCK ♩=96

Two staves of bass clef musical notation for a rock piece at 96 bpm. The first staff contains four measures of music, ending with a double bar line and a '2' above it. The second staff contains four measures of music, ending with a double bar line.

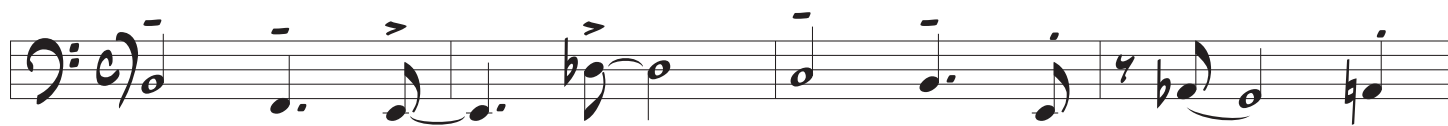
ROCK ♩=96

Two staves of bass clef musical notation for a rock piece at 96 bpm. The first staff contains four measures of music, ending with a double bar line. The second staff contains four measures of music, ending with a double bar line.

MED. SWING ♩=126

Five staves of bass clef musical notation for a medium swing piece at 126 bpm. The first staff contains four measures of music. The second staff contains four measures of music, including a triplet. The third staff contains four measures of music, including a triplet. The fourth staff contains four measures of music. The fifth staff contains four measures of music, ending with a double bar line.

MELO. BOSSA ♩=138



ROCK ♩=92



ROCK ♩=92

Three staves of musical notation for a rock piece. The music is written in bass clef, 4/4 time, and the key signature has two flats (B-flat major). The first staff begins with a common time signature 'C' which is quickly changed to 4/4. The melody consists of eighth and quarter notes, with some beamed sixteenth notes. The second and third staves continue the melodic line, ending with a double bar line.

BALLAD ♩=108

Three staves of musical notation for a ballad. The music is written in bass clef, 3/4 time, and the key signature has two flats (B-flat major). The first staff starts with a 3/4 time signature. The melody is characterized by long, sweeping lines with many slurs, featuring half notes and quarter notes. The second and third staves continue this melodic style, ending with a double bar line.